



Silver Heights
Badshahnagar



Silver Heights Vadshahnagar

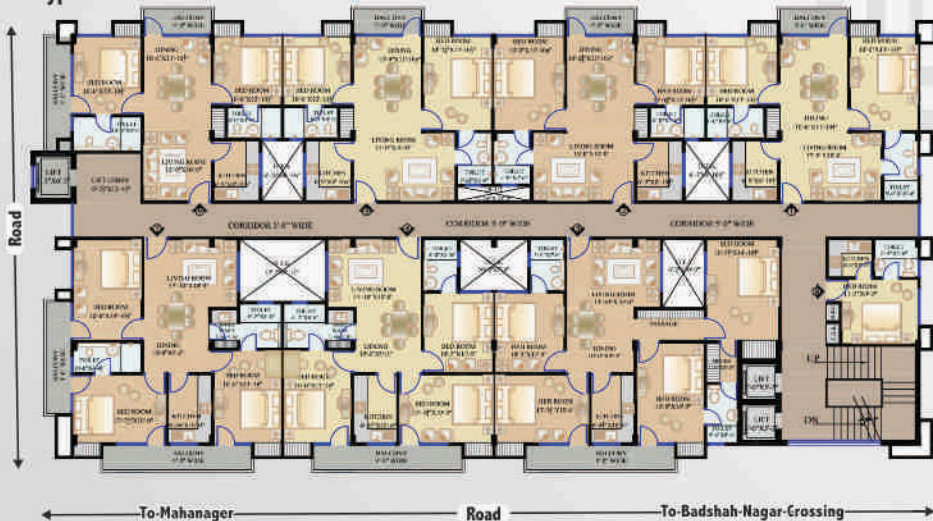
Why stay in a rented apartment when you can afford one of your own ?

Presenting the most convenient and most affordable apartments in your city, *Silver Heights*. *Silver Heights* offers you a choice ranging from 1 Bedroom Apartment to 2 Bedroom Apartments, exquisitely and intelligently designed to provide maximum living space.

Surrounded by lush green environment, and equipped with state-of-the-art security systems, *Silver Heights* ensures an absolutely peaceful environment. Invest here for a lifestyle that matches world class luxury.



Typical - Floor Plan



PARKING PLAN

- 3000 to 6000 sq. feet
- Easy access from major travel routes
- Dedicated Parking
- Drive - through lanes.

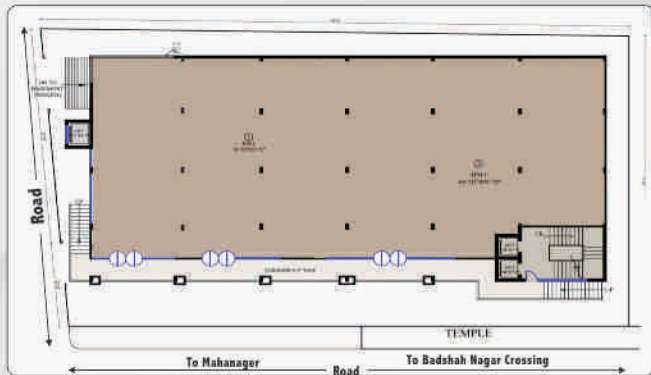
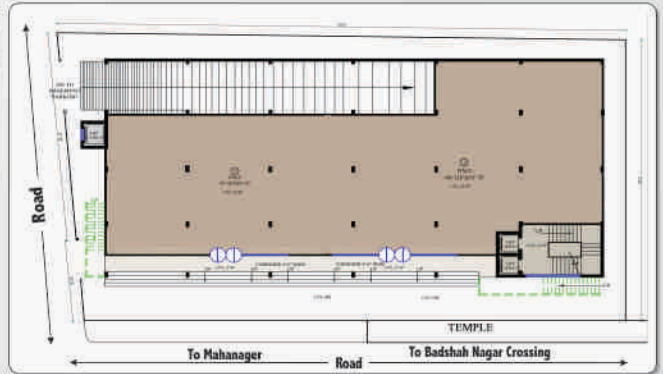




Retail Facilities

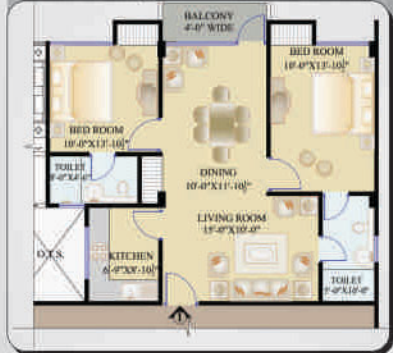
- Over 10,000 sq. feet of space available.
- Store fronts with matching themes.

Lower Ground Floor



Upper Ground Floor

UNIT - I - 985.14 Sq. Ft.



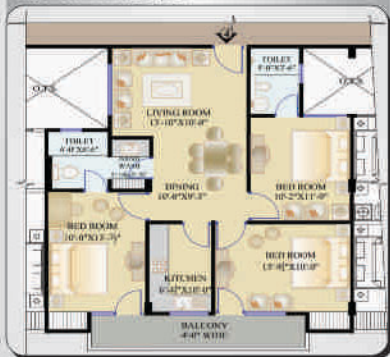
UNIT - II - 958.04 Sq. Ft.



UNIT - III - 1477.20 Sq. Ft.



UNIT - IV - 1164.19 Sq. Ft.



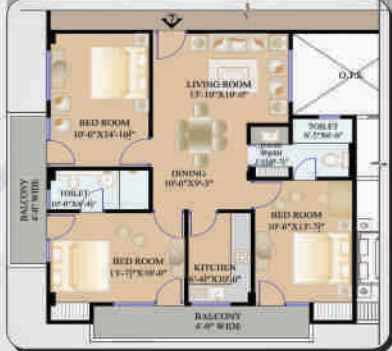
UNIT - V - 961.46 Sq. Ft.



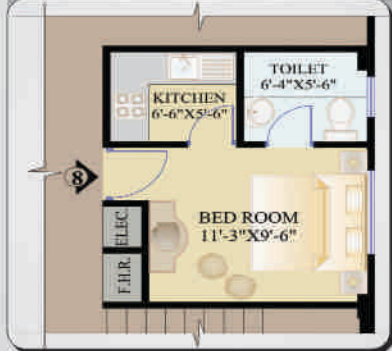
UNIT - VI - 968.56 Sq. Ft.



UNIT - VII - 1295.79 Sq. Ft.



UNIT - VII - 250.92 Sq. Ft.



SPECIFICATIONS



FLOORING

The entire apartment including utility balcony, lobby will have vitrified tiles flooring. While the kitchen, toilets will have antiskid tiles.

Wooden flooring in master bedroom.

DOORS



The entrance to every apartment will have a Laminated Door with frames made of seasoned wood. The bathroom door will be Water Proof & Laminated.



WINDOW

The window frames and shutters shall be of Seasoned Wood or Aluminium sections. The window shutters shall be factory made cold pressed shutters/ M.S. Sections. All windows shall have glazed as-well-as jali shutters. Both shutters and frames shall be painted with synthetic paint. Grills are optional.

KITCHEN



To enhance safety all wiring shall be with fire resistant PVC insulated copper conductors. There will be electric points at appropriate places for A.C./Coolers Cable points shall be provided in the appropriate rooms.



SANITARY WARE

Master Toilet: Here you can choose from any of the lights pastel colour tiles, out of shades specified by the company. Complementing this will be the light coloured sanitary ware of your choice.

SECURITY



All the common areas will be monitored by CCTV Cameras

Lift facilities for all floors will be provided.

Overhead storage tanks of suitable capacity & borewell for an auxiliary water supply will be provided.

RCC framed structure

External Finish : Textured Paint, Glass & Aluminum Composite Panel (ACP)

The colors of the tiles & the greener shown are totally artistic & imaginary.



Flats designed as per Vastu Shastra and
Project Approved by LDA.



Promoters & Builders

- Silver Colonisers
(Unit of Beg Builders & Colonisers Pvt. Ltd.)
City Office : 2 Cantt. Road, Kaiserbagh, Lucknow.
- Mirai Developers Pvt. Ltd.
Office : 43, Hewett Road, Shakkur Compound, Lucknow.
- Contact Details
0522-4105173, 0522-4076103, 9336949359,
9336162700, 9956249999

Architect Mr. Kausar Parvez
Vijit & Associates, Hazratganj, Lucknow.